



Available SF: 2,120

Total Building SF: 14,660



Address: 13314 Mapledale St, Norwalk, CA 90650
Cross Streets: Mapledale St / Carmenita Rd

**Off Carmenita Between Rosecrans And 5 Fwy
Small Industrial Unit With 900 SF Of Offices
Office Size May Be Reduced If Preferred
No CAMS**

Lease Rate/Mo: \$1,887
Lease Rate/SF: \$0.89
Lease Type: Gross
Terms: 3 yrs
Price/SF: --
Sale Price: --
Taxes: --
Available SF: 2,120
Minimum SF: 2,120
Prop Lot Size: POL
Yard: Fenced
Zoning: M1

Construction Type: Concrete Block
Const Status/Year Blt: EXIST / 1973
Sprinklered: No
Ground Lvl Drs/Dim: 1 / 10 x 10
Dock High/Dim: 0 / --
Clear Height: 12
Heat/Cool: Unknown
Roof Type: Lam Glu WB
A: 200 V: 120-120 Ø: 3 W: 4
Parking Spaces: 4 / Bldg Ratio: 2:1
Rail Service: No
Specific Use: Light Industrial

Office SF / #: 900 / 4
Restrooms: 2
Office Air: TBD **Office Heat:** TBD
Finished Ofc Mezz: --
Include In Available: --
Unfinished Mezz: --
Include In Available: --
Possession: 12/01/17
To Show: Call Agent
Region: MidCounties
Thomas Guide: 737-C3
APN#: 8070-026-012

Listing Company: Penta Pacific Properties - Santa Fe Springs (562) 699-1922

Agents: Douglas Wells (562) 908-6012x

Property/Listing/Ste #: 711394/1183708/3127539

Listing Date: 11/21/2017

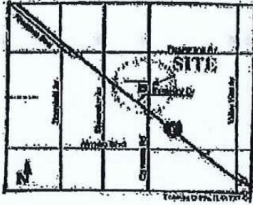
FTCF: CB250N000S000/AOAA

Notes: 3% Annual Increase. (See Reverse)

CARMENITA BUSINESS CENTER - Mapledale

13314 Mapledale Street

- 2,120 sq ft
- 900 sq ft office
- NO CAMS



For further information call:



Doug Wells
(562) 908-6012

PENTA PACIFIC PROPERTIES
9500 Norwalk Boulevard
Santa Fe Springs, CA 90670

← Mapledale Street →

