



Available Acres: 1.97

Available SF: 85,813



Address: 12300 Florence Ave, Santa Fe Springs, CA 90670
Cross Streets: Florence Ave / Norwalk Blvd

**Prime 1.97 Acre Parcel on Main Street - Florence Avenue
Central Santa Fe Springs Location
Adjacent to New Development - Goodman Logistics Center
Access to 605 & 5 Freeways**

Price/SF: \$39.62 **Sale Price:** \$3,400,000
Available SF: 85,813 **Acres:** 1.97 **Min Acres:** 1.97
Region: MidCounties **Specific Use:** Other **Zoning:** M2
Rail Service: No **Lot Size:** 85,813 SF / 1.97 AC **Thomas Guide:** 706-J6
Fenced: Yes **Paved:** No **Bldg SF Desc:** None **APN:** 8009-022-071
Land Desc: Gen. Topog: Flat. Easements: See PTR; Adtl street ded. SF: See PTR

Utilities: **Gas** **Water** **Sewer** **Electric** **Telephone** **Fiber Optic/Broadband**

Utilities Comments: Buyer to verify

Listing Company: Penta Pacific Properties - Santa Fe Springs (562) 699-1922

To Show: - -

Agents: Douglas Wells (562) 908-6012x

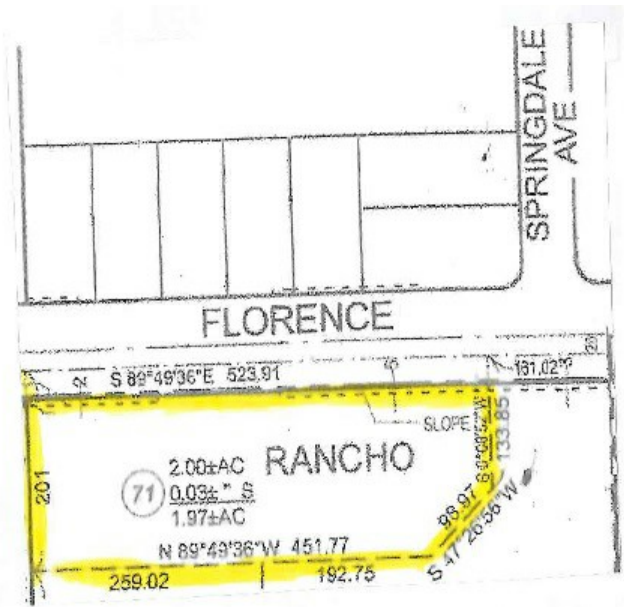
Property/Listing #: 2506043/1595615

Listing Date: 03/14/2016

FTCF: CB000N000S300

Notes:





This information has been obtained from sources believed reliable. While we do not doubt its accuracy, we have not verified it and make no guarantee, warranty or representation about it. It is your responsibility to independently confirm its accuracy.

